

WinGQP User Manual

WinGQP is a logging program for the Georgia QSO party.

The program and updates are downloaded from <http://www.qsoparty.org/html/wingqp.html>. Follow the download or update instructions on the web pages.


INSTALLATION:

The download of the full program will be a self extracting zip file named WinGQPFull.exe. Update files will also be self extracting and have names that indicate the specific update.

The web page will look like this, but may be updated or revised in the future.

Clicking on “Download the zip” will start the download. Direct the downloaded file to a location on your PC you select and can find after the transfer is complete.

Note that you must have .NET 3.5 SP installed on your PC before starting the installation.

 Double click on the downloaded file to begin the extraction of the files.



The download should be extracted **only** into “C:\” the root directory. The extraction will create a folder, “C:\WinGQP” if it does not exist and also will extract all the needed folders inside the WinGQP folder.

If you are doing an update, check the web page instructions, but the extract will probably go to “C:\WinGQP\”

Your C:\WinGQP folder should look like this.....

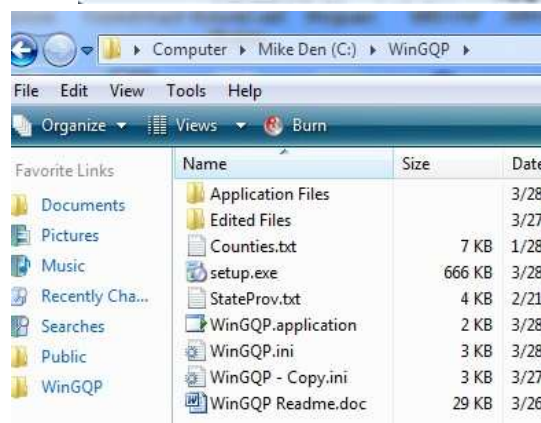
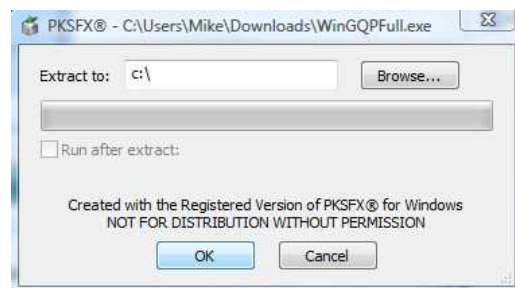
Log files will be located in “Edited Files” and the download will not over write any files you have previously created. A couple of test files are downloaded as samples.

“Application Files” will contain a folder with the current version of a full download, “WinGQP_1_0_0_70” for example. The last number in the name increases with new versions.

All of the files in main folder, “C:\WinGQP” are over written.

Counties, setup, StateProv, WinGQP.application, WinGQP.ini, WinGQP – Copy.ini, WinGQP Readme.doc and others here will be over written with new files with the full version download.

Since a refresh includes the “ini” file, you may have to reset some items via the “Options” menus if you had previously set some personal choices.



SETUP:

Double click on “setup.exe” in the WinGQP folder to start the setup process. Follow the instructions for your operating system to complete the installation. The peach icon should appear on your desktop. The icon should look like the one on the right but may vary depending on your operating system.

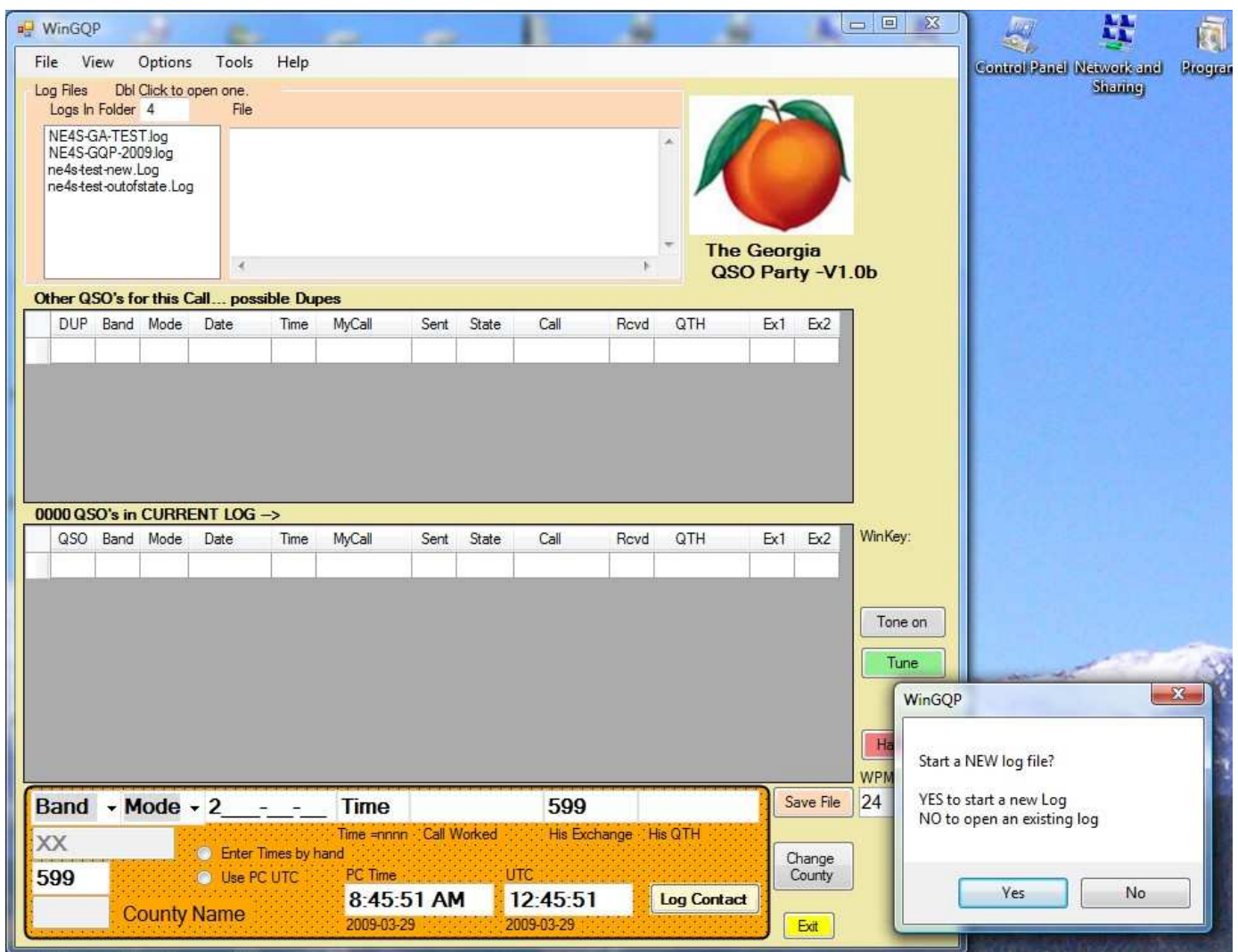
The Peach is a shortcut to “C:\WinGQP\WinGQP.application”.

WinGQP should now show up on “Programs” or “Add Remove Programs” in your “Control Panel”, and can be removed there.



After setup completes, WinGQP should start and you will see the main screen.

First Run:



This is the WinGQP main screen.

Clicking YES will take you through the steps to create a new log by naming the log, and getting all the header information needed for a Cabrillo log file. Optional header entries may also be made.

Clicking NO will show a selection of files that are in the “Edited Files” folder for you to choose to open.

Creating a new log:

Enter a name for your new log. The suffix “.log” will be added automatically.

First save or file name needed.

Enter a File Name for this Log (.log will be added)

OK Cancel

[Empty text input field]

Then enter your call sign, as you want it to be used in the log and exchange. Just enter the “Bare” call sign, do not enter “/M” or other call suffix.

Call sign missing from Header.

Enter Your Call

OK Cancel

[Empty text input field]

Entering your call sign causes the Header Info window to appear with your call filled in and shaded green.

Notice that 6 more selections are shaded red below your call. These all **must** be filled in by clicking on the down arrow in each box and then clicking on a selection from the drop down. After selection, these items will be shaded green... “Good”.

If you select GA as your state, you will see the window to select a county. Click on the county you want to log in your QSOs.

Click your home county for fixed stations, or the county you are presently located in for Rovers or Portable stations. Rovers can change counties as they move by clicking on “Change County” in the main window, and the same county selection window will pop up at that time.

You may also enter optional items after the required items are completed.

Cabrillo 3 Header Info

Header Information

CabV Cabrillo V3.0 Entry Class Contest 2009

Name [Empty] X Category Addr in Cab file

Call NE4S

1 Location [Red Highlighted]

2 Operator [Red Highlighted]

3 Pwr [Red Highlighted]

4 Mode [Red Highlighted]

5 Station [Red Highlighted]

6 Transmitters [Red Highlighted]

Assist [Red Highlighted]

Required Ops

Overlay

Band [Empty]

Time [Empty]

EMAIL [Empty]

Claim Score [Empty]

Club [Empty]

Logger [Empty]

QRZ Call Lookup Results (QRZ must be installed on HD)

QRZ [Empty]

Addr [Empty]

NE4S QRZ Lookup

Hide Me Save Header Info Clear Header

Error listing-

[Empty error listing area]

GA PD2 PD1

Soap

Red Highlighted items must be completed to continue. Please make your selections from the numbered list. Then hit Save or Hide.....

After completion of the header information, the main form will show your call sign and QTH in the log entry panel.

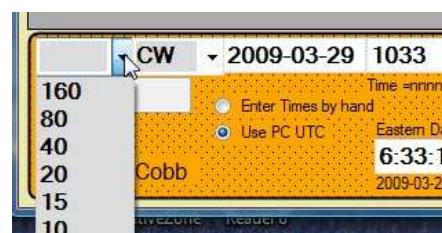
The Call in the log panel can not be edited there. Changes must be made by revisiting the Header form. GA stations **can** change the county in the log panel. The view menu allows the header to be re-shown, if it is hidden, for edits.



You can now save the header, and hide the Header window. If you have moved the header, or other windows, they will be displayed in the position you left them when shown again after hiding, or program restarts. Notice that the optional “Club” selection has been filled in the above example. You are encouraged to enter your local club for awards. Sponsoring clubs SECC and SEDXC are not eligible for any awards. The header information is complete; the other items on the window will be explained in later detail sections.

Enter Band and Mode:

On the log panel, Band and Mode **must** be selected before logging any QSOs. Clicking the arrow beside each item shows a drop down menu for selecting your choice for logging.

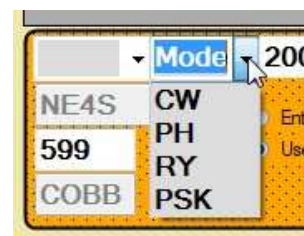


GQP allowed Bands are 160-6.

While 4 modes are selectable, RY (RTTY) and PSK entries will be scored as CW contacts. Digital modes are not currently separated for awards or prizes, but are encouraged for participation.

Notice that “Use PC UTC” is selected by default. Be sure your PC clock is right. “Enter Times by hand” will be explained in a detail section.

BE SURE TO UPDATE BAND AND MODE AS YOU CHANGE THEM IN YOUR OPERATIONS. ERRONEOUS LOG ENTRIES COULD RESULT!!



You are now ready to enter QSOs for logging. The Cursor should be positioned in the “Call Worked” box and ready for your entry of your first QSO. If it is not there, just click the mouse there and you can continue.

A Georgia station may enter QSOs from any state, Canadian province, or DX country.

Enter the common abbreviation for State or Province. (View>State/Prov Mults to check entries)

Enter “DX” for DX stations, not the country,

Enter the Georgia County for contacts in Georgia. (GA will be accepted but try for county)

A multiplier for the state of Georgia will be credited the first time any county is worked in each mode.

Out of State stations must enter counties worked in Georgia, only.

(View>County Mults to see Georgia county abbreviations that are acceptable.)

You are now ready for logging. Other options, like using WinKey, the menus, and options will be detailed in later sections.

Entering QSOs:

The orange log entry panel on the main window is where call signs, exchanges, and QTH's are entered for logging contacts. When the times are from the PC, as in the example, use of the **spacebar or tab keys** will move the cursor from the "Call Worked" box to "His QTH" box and back around again. When the call and QTH are right, the **Enter** key will log the contact, put it in the grid above the orange panel, clear the log entry boxes, and set the cursor for a new contact.

This contact is ready for the **Enter** key to be hit to log the QSO.

Clicking the "Log Contact" button also will log the "Q".

40 CW 2009-03-29 1035 WB9MMR 599 TX
NE4S
599
COBB Cobb
Enter Times by hand
Use PC UTC
Eastern Daylight Time UTC
6:35:24 AM 10:35:24
2009-03-29 2009-03-29
Log Contact
Save File
Change County
Exit

After logging the QSO, you should see the contact in the grid area, and the log panel cleared.

At the top of the contact grid is a label that identifies the current file you are working on. The number of QSOs in the file is on the left side.

The contact has been added to the log file, this is done after each log entry. You do not have to click "Save File" unless you have edited the grid area, or made unsaved header changes.

If you were to open your log file, with Word or Notepad, you would see a text file as is shown to the right.

Be sure to **close** Word/Notepad before logging any more contacts. The file cannot be accessed by WinGQP if it is open in an editor. Do not save any changes unless you are familiar with Cabrillo files.

When you exit WinGQP, you will be prompted for a file save. Even though all your QSOs have been entered as they were logged, you might want to do a save to capture any Edits in the Grid, or changes in the Header Information that were not previously saved.

When you restart WinGQP, you will go directly to the log entry panel, and the information from your last QSO will be preloaded. Be sure to change QTH, Band or Mode if needed on restarts.

More information is available in the full user manual.

1 QSO's in CURRENT LOG -> C:\WinGQP\Edited Files\NE4S-GQP-2009.log

QSO	Band	Mode	Date	Time	MyCall	Sent	State	Call	Rcvd	QTH	Ex1	Ex2
QSO: 40	CW		2009-03-29	1040	NE4S	599	COBB	WB9MMR	599	TX		

40 CW 2009-03-29 1040 599
NE4S
Enter Times by hand
Time =nnnn Call Worked His Exchange His QTH
Save File
Change

NE4S-GQP-2009.log - Notepad

File Edit Format View Help

START-OF-LOG: Cabrillo v3.0
NAME:
CALLSIGN: NE4S
LOCATION: GA
CATEGORY-OPERATOR: SINGLE-OP
CATEGORY-POWER: LOW
CATEGORY-MODE: MIXED
OPERATORS:
CATEGORY-STATION: FIXED
CATEGORY-TRANSMITTER: ONE
CATEGORY-ASSISTED:
CATEGORY-BAND:
CATEGORY-TIME:
CATEGORY-OVERLAY:
CLAIMED-SCORE:
XCATEGORY:
CREATED-BY: win GQP 1.0
CONTEST:
CLUB-NAME: South East Contest Club
ADDRESS:
ADDRESS:
ADDRESS:
SOAPBOX:
QSO: 40 CW 2009-03-29 1344 NE4S 599 COBB WB9MMR 599 TX

